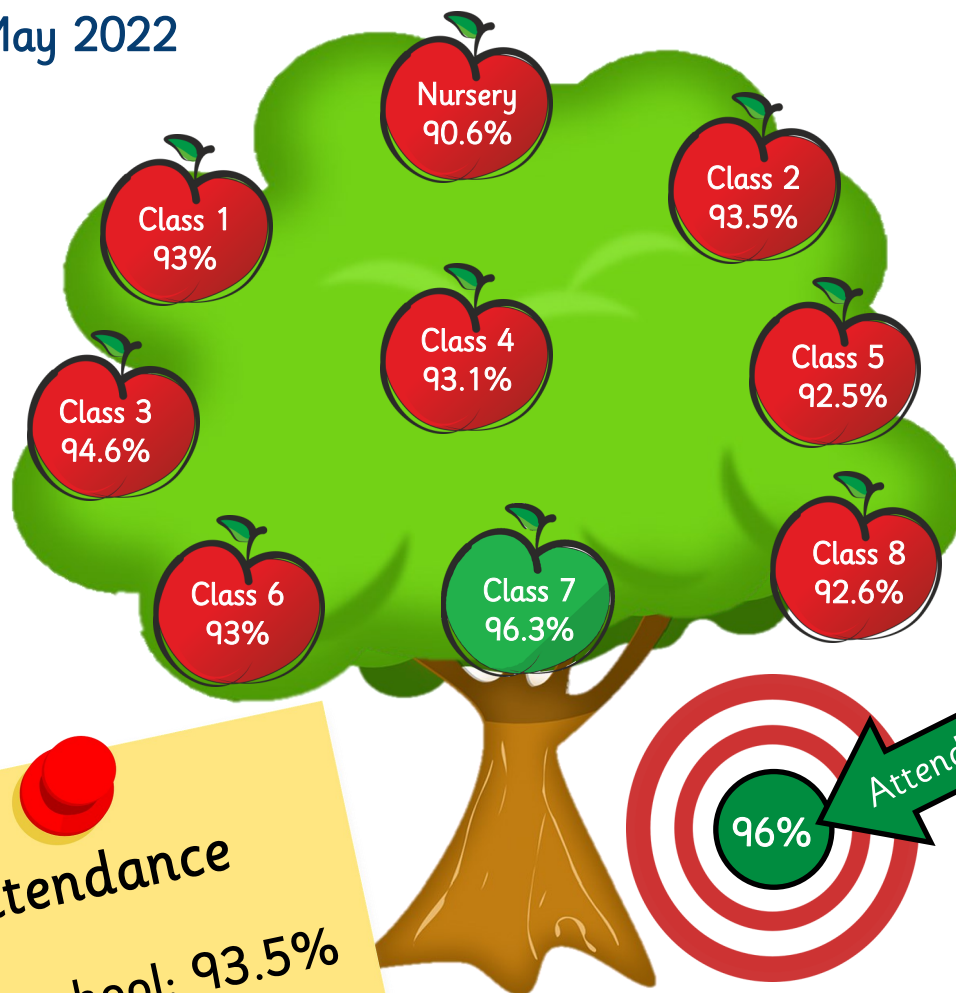


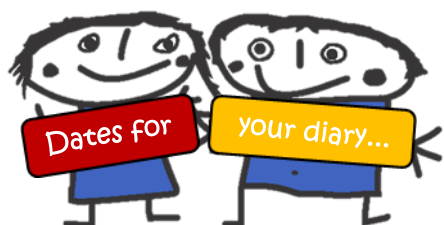
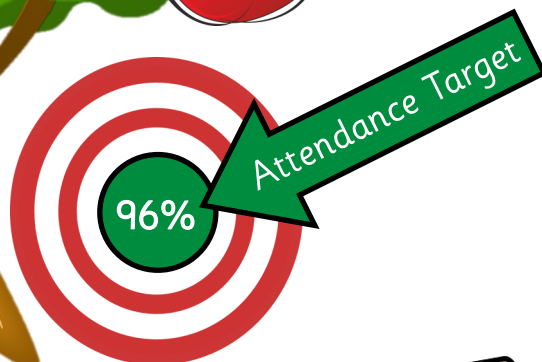


# Rowena Newsletter

06 May 2022



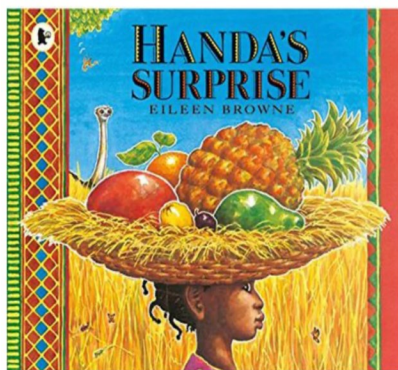
**Attendance**  
Whole school: 93.5%



Monday 9th May Ian's Mobile Farm - Reception	Friday 27th May Training Day - School Closed
Wednesday 25th May Class Photographs	Monday 6th June School Re-opens
Thursday 26th May Royal Jubilee Garden Party	Thursday 21st July School Closes for Summer
Thursday 26th May School Closes for Half Term	

## Nursery

This week in Nursery we have enjoyed listening to the story 'Handa's Surprise'. The children have been practising their cutting skills snipping pictures of fruit from the story.



## Reception (Classes 1 & 2)

In Reception this week we have continued our work on 'How Do They Grow', discussing the different parts of a plant and that they need water, air and sun to survive. The children have loved getting creative with their paint brushes and are in the process of making some beautiful sunflowers.



## Year 1 (Classes 3, 4 & 5)

This week, Year 1 have explored weight and capacity in mathematics. We have investigated the amount of water in containers and compared the weight of a variety of different objects.



## Year 2 (Classes 6, 7 & 8)

This week in Year 2 the children took part in a 'Victorian Experience'. They sampled what life was like in a Victorian classroom, looked at different Victorian artefacts and had the opportunity to experience a Victorian wash day.



## Messages from Mrs Benton

We are continuing to work hard to improve attendance in school. I know that many children have had lots of illness as well as Covid this academic year which has had an unavoidable impact on their attendance levels. In order to reduce any further disruption to children's education we will need to work together to ensure children only miss school when they are too unwell to attend. Please remember that I am not able to authorise holidays in term time.

Research shows that missing just a few days of school can impact children's chances of making good progress. Children with good attendance are far more likely to do well, develop confidence and positive self esteem which enables them to access more opportunities and have a better quality of life in adulthood.

It is a parents responsibility to ensure children attend school. If you are having difficulties with attendance, please get in touch and we can help you to access the support that you need.

**Please remember school starts at 8:50am..**

**Please ensure your child is on time and ready to learn.**

## Safeguarding

At Rowena Academy, our school community has a duty to safeguard and promote the welfare of children. Our Designated Child Protection Persons are Mrs Benton and Ms Kahler. If you have any concerns about the welfare of a child in our Academy, please speak to one of the designated staff.

Here are some useful links to help keep your child safe online:

<http://ceop.police.uk/>

<http://www.thinkuknow.co.uk>

<http://www.childnet.com/>

<http://www.netsmartz.org/Safety/SafetyTips>

<http://www.kidsmart.org.uk/>

<http://www.bbc.co.uk/cbbc/topics/stay-safe>



Follow us on Twitter for news and updates:

**@DeltaRowenaAc**