

Rowena Academy



Our Safeguarding Policy

**At Rowena we tell a
grown up if we have a
problem.**

If we are feeling:

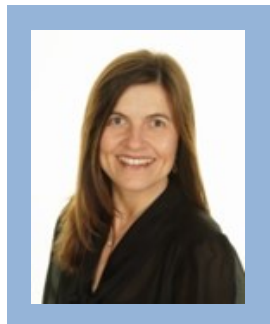
- . worried**
- . frightened**
- . lonely**
- . guilty**
- . upset**
- . scared**
- . uncomfortable**
- . ashamed**
- . sad**
- . nervous**

**Everyone is here to help us
sort out our problems. We can
ask any grown up who works
at our school to help us.**

**Mrs Benton is our Designated
Safeguarding Lead.**



**Ms Kahler and Mrs Hughes are
our Deputy Designated
Safeguarding Leads.**



**If you have a problem
we can work it out
together.**

Remember...

**Hand in hand together we
can.**



**Written by the Academy
Council.**